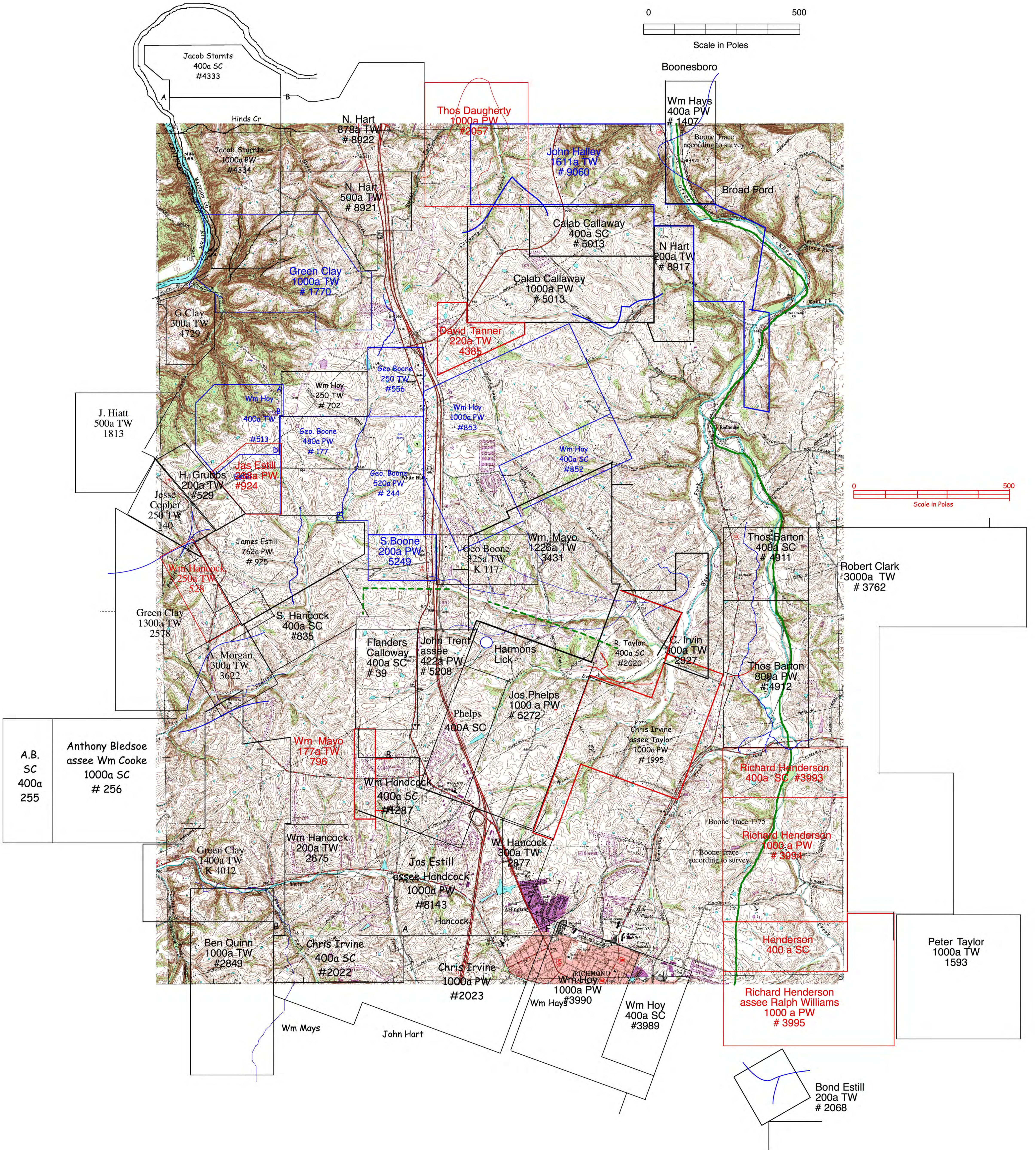


Scale in Poles



Scale in Poles



Jacob Starnts  
400a SC  
#4333

N. Hart  
878a TW  
# 8922

Thos Daugherty  
1000a PW  
#2057

John Halley  
1611a TW  
# 9060

Wm Hays  
400a PW  
# 1407

Jacob Starnts  
1000a PW  
#4334

N. Hart  
500a TW  
# 8921

Calab Callaway  
400a SC  
# 5013

Boone Trace  
according to survey

Broad Ford

Green Clay  
1000a TW  
# 1770

David Tanner  
220a TW  
4385

Calab Callaway  
1000a PW  
# 5013

N Hart  
200a TW  
# 8917

G. Clay  
300a TW  
4729

Geo. Boone  
250 TW  
#556

Wm Hoy  
1000a PW  
#853

Wm Hoy  
400a SC  
#852

J. Hiatt  
500a TW  
1813

Wm Hoy  
400a TW  
#513

Geo. Boone  
480a PW  
# 177

Geo. Boone  
520a PW  
# 244

H. Grubbs  
200a TW  
#529

Jas Estill  
200a PW  
#924

S. Boone  
200a PW  
5249

Geo Boone  
325a TW  
K 117

Wm Mayo  
1226a TW  
3431

Thos Barton  
400a SC  
# 4911

Robert Clark  
3000a TW  
# 3762

Jesse Copher  
250 TW  
140

James Estill  
762a PW  
# 925

S. Hancock  
400a SC  
#835

John Trent  
422a PW  
# 5208

Jos. Phelps  
1000 a PW  
# 5272

R. Taylor  
400a SC  
#2020

C. Irvin  
300a TW  
2927

Green Clay  
1300a TW  
2578

A. Morgan  
300a TW  
3622

Flanders  
Calloway  
400a SC  
# 39

Phelps  
400A SC

Chris Irvine  
assee Taylor  
1000a PW  
# 1995

Thos Barton  
800a PW  
#4972

Anthony Bledsoe  
assee Wm Cooke  
1000a SC  
# 256

Wm Mayo  
177a TW  
796

Wm Hancock  
400a SC  
#1287

Harmors  
Lick

Richard Henderson  
400a SC #3993

Richard Henderson  
1000a PW  
# 3994

Green Clay  
1400a TW  
K 4012

Wm Hancock  
200a TW  
2875

Jas Estill  
assee Hancock  
1000a PW  
#8143

Wm Hancock  
300a TW  
2877

Richard Henderson  
400 a SC

Henderson  
400 a SC

Peter Taylor  
1000a TW  
1593

Ben Quinn  
1000a TW  
#2849

Chris Irvine  
400a SC  
#2022

Chris Irvine  
1000a PW  
#2023

Wm Mayo  
1000a PW  
#3990

Wm Hays  
400a SC  
#3989

Richard Henderson  
assee Ralph Williams  
1000 a PW  
# 3995

Bond Estill  
200a TW  
# 2068

Wm Mays

John Hart

